

**MX Series
AC and DC Power Source
Installation Manual**

TEL: +1 (858) 677-9040

FAX: +1 (858) 677-0940

Email: sales@calinst.com

Web Site: <http://www.calinst.com>

Installation Manual
AC Power Source
California Instruments

Models:

- . MX45-1
- . MX45-3
- . MX45-3Pi
- . MX90-3
- . MX90-3Pi
- . MX90-3Pi-MB
- . MX135-3
- . MX135-3Pi
- . MX135-3Pi-MB

© Copyright 2002 - 2008, California Instruments. Rev C, June 2008.

SAFETY SUMMARY

This power source contains high voltage and current circuits, which are potentially lethal. Because of its size and weight, mechanical stability must be ensured. The following safety guidelines must be followed when operating or servicing this equipment. These guidelines are not a substitute for vigilance and common sense. California Instruments assumes no liability for the customer's failure to comply with these requirements. If the power source is used in a manner not specified by California Instruments, the protection provided by the equipment may be impaired.

BEFORE APPLYING POWER

1. Verify the correct three phase input voltage is applied to the unit. Input ratings are shown on the model and serial number tag located at the rear of the unit.
2. The chassis and cabinet of this power source must be grounded to minimize shock hazard. A chassis ground is provided at the input terminal block. This is located in the front of the cabinet on the lower left hand side. The lower front cover panel must be removed to access the line input and ground connections. The chassis ground must be connected to an electrical ground through an insulated wire of sufficient gauge.

FUSES

Use only fuses of the specified current, voltage, and protection speed (slow blow, normal blow, fast blow) rating. Do not short out the fuse holder or use a repaired fuse.

DO NOT OPERATE IN A VOLATILE ATMOSPHERE

Do not operate the power source in the presence of flammable gases or fumes.

DO NOT TOUCH ENERGIZED CIRCUITS

Disconnect the power cable before servicing this equipment. Even with the power cable disconnected, high voltage can still exist on some circuits. Discharge these voltages before servicing. Only qualified service personnel may remove covers, replace components or make adjustments.

DO NOT SERVICE ALONE

Do not remove covers, replace components, or make adjustments unless another person, who can administer first aid, is present.

DO NOT EXCEED INPUT RATINGS

Do not exceed the rated input voltage or frequency. Additional hazards may be introduced because of component failure or improper operation.

DO NOT MODIFY INSTRUMENT OR SUBSTITUTE PARTS

Do not modify this instrument or substitute any parts. Additional hazards may be introduced because of component failure or improper operation.

MOVING THE POWER SOURCE

When moving the power source, observe the following:

1. Remove all AC power to unit.
2. Do not attempt to lift by hand. Raise the levelers and push the unit using two people to prevent injury or use forklift equipment with a qualified operator.

ALLOW CAPACITORS TO DISCHARGE

Capacitors in the power source may hold a hazardous electrical charge even if the power source has been disconnected from the mains supply. Allow capacitors to discharge to a safe voltage before servicing internal circuits or touching exposed pins of mains supply connectors.

SAFETY SYMBOLS:



THIS SYMBOL INDICATES DIRECT CURRENT



THIS SYMBOL INDICATES ALTERNATING CURRENT



THIS SYMBOL INDICATES BOTH DIRECT AND ALTERNATING CURRENT



THIS SYMBOL INDICATES THREE-PHASE ALTERNATING CURRENT



THIS SYMBOL INDICATES EARTH (GROUND) TERMINAL



THIS SYMBOL INDICATES PROTECTIVE CONDUCTOR TERMINAL



THIS SYMBOL INDICATES FRAME OR CHASSIS TERMINAL



THIS SYMBOL INDICATES ON (SUPPLY)



THIS SYMBOL INDICATES OFF (SUPPLY)



THIS SYMBOL INDICATES CAUTION, RISK OF ELECTRIC SHOCK



THIS SYMBOL INDICATES CAUTION (REFER TO ACCOMPANYING DOCUMENTS)

WARRANTY INFORMATION

CALIFORNIA INSTRUMENTS CORPORATION warrants each instrument manufactured by them to be free from defects in material and workmanship for a period of one year from the date of shipment to the original purchaser. Excepted from this warranty are fuses and batteries that carry the warranty of their original manufacturer where applicable. CALIFORNIA INSTRUMENTS will service, replace, or adjust any defective part or parts, free of charge, when the instrument is returned freight prepaid, and when examination reveals that the fault has not occurred because of misuse, abnormal conditions of operation, user modification, or attempted user repair. Equipment repaired beyond the effective date of warranty or when abnormal usage has occurred will be charged at applicable rates. CALIFORNIA INSTRUMENTS will submit an estimate for such charges before commencing repair, if so requested.

VOIDED WARRANTY

Any misuse or abuse of, as well as any modifications or changes made to any California Instruments product will automatically void the factory warranty. Removing non-normal use related covers or any sealed covers or lids also automatically voids factory warranty unless express written or email authorization is obtained from the customer service department in advance. The customer service department can be reached via email at support@calinst.com.

SERVICE PROCEDURE

If a fault develops, notify CALIFORNIA INSTRUMENTS at support@calinst.com or its local representative, giving full details of the difficulty, including the model number and serial number. On receipt of this information, service information or a Return Material Authorization (RMA) number will be given. Add the RMA number furnished to the shipping label. Pack the instrument carefully to prevent transportation damage, affix label to shipping container, and ship freight prepaid to the factory. CALIFORNIA INSTRUMENTS shall not be responsible for repair of damage due to improper handling or packing. Instruments returned without RMA No. or freight collect may be refused at California Instruments discretion. Instruments repaired under Warranty will be returned either via prepaid surface freight or low cost airfreight at California Instruments discretion. Instruments repaired outside the Warranty period will be returned freight collect, Ex Works CALIFORNIA INSTRUMENTS 9689 Towne Centre Drive, San Diego, CA 92121-1964. If requested, an estimate of repair charges will be made before work begins on repairs not covered by the Warranty.

DAMAGE IN TRANSIT

The instrument should be tested when it is received. If it fails to operate properly, or is damaged in any way, a claim should be filed immediately with the carrier. The claim agent should obtain a full report of the damage, and a copy of this report should be forwarded to us by fax or email (Fax: 858 677 0940, Email: support@calinst.com). CALIFORNIA INSTRUMENTS will prepare an estimate of repair cost and repair the instrument when authorized by the claim agent. Please include model number and serial number when referring to the instrument.

SPARE PARTS

To order spare parts, user manuals, or determine the correct replacement part for your California Instruments products, please contact the Customer Service department by phone at + 1 858 677 9040, press 2 or by email support@calinst.com.

Table of Contents

1. Introduction	7
1.1 General Description	7
1.2 Manual organization and format	7
2. Unpacking and Installation	8
2.1 Unpacking.....	8
2.2 Power Requirements	8
2.3 Mechanical Installation.....	9
2.4 AC Input Connections and Wiring.....	9
2.5 AC On/Off Circuit Breaker on MX45 front panel.	12
2.6 Output Connections	14
2.7 Connectors - Rear Panel	24
2.8 Multiple Cabinet System Configurations	27
2.9 Clock and Lock Configurations	28
2.10 Basic Initial Functional Test	30

List of Figures

Figure 2-1: The MX45 Power Source.....	8
Figure 2-2: Location of AC Input Fuse Block and Chassis Ground Connection	10
Figure 2-3: MX45 AC Input Connection Diagram	11
Figure 2-4: Rear Panel.....	13
Figure 2-5: External sense cable shield connection to chassis ground.....	14
Figure 2-6: Location of Output Terminals.....	16
Figure 2-7: MX45-1 Output Wiring	17
Figure 2-8: MX45-3 Output Wiring	18
Figure 2-9: MX90 or MX90-MB Output Wiring.....	19
Figure 2-10: Two MX45's in Clock and Lock mode Output Wiring	20
Figure 2-11: MX135 or MX135-MB Output Wiring.....	21
Figure 2-12: Three MX45's in Clock and Lock mode - Output Wiring	22
Figure 2-13: Ship kit Terminal Block dimensions	23
Figure 2-14: Emergency Switch (ES Option) shut off inter connect on -MB systems.....	26
Figure 2-14: Multi-Cabinet DIP Switch Location and Setting.....	27
Figure 2-15: Functional Test Setup.....	31

List of Tables

Table 2-1: Suggested Input Wiring Sizes for each MX45 Cabinet.....	12
Table 2-2: Suggested Output Wiring Sizes	15
Table 2-3: Output Terminal connections.....	16
Table 2-4: System Interface Connectors.....	24
Table 2-5: Analog Interface Connector	25
Table 2-6: BNC Connectors	25
Table 2-7: External Sense Connector	26
Table 2-8: Clock and Lock Configuration settings	28
Table 2-9: Clock and Lock Initialization settings.....	29

1. Introduction

This installation manual is provided in hardcopy format and contains information on the installation only of all power systems that use the MX Series power sources with the programmable controller.

All other MX Series manual are provided in Adobe Acrobat PDF format on CD ROM P/N CIC496. The CD ROM is included in the MX Series Shipkit.

1.1 General Description

The MX Series AC and DC power source systems are high efficiency, floor standing AC and DC power sources that provide a precise output with low distortion. Available voltage ranges are 150 Vac, 300 Vac and 400 Vac in AC mode and 200 Vdc and 400 Vdc in DC mode. The MX45-3Pi can operate in either single or three-phase mode. The MX45 is available in either single or three-phase mode. All other models operate in three-phase mode.

Models with a -1 or -3 designation provide full front panel operation but do not include a RS232C or IEEE-488 remote control interface. An optional RS232C/IEEE-488 control interface can be added at the time of order however (-P) option. Models with the Pi controller offer several additional standard features, including the RS232C/IEEE-488 interfaces, arbitrary waveform generation, dual voltage ranges and additional measurement functions.

The MX Series units are contained in a compact floor standing enclosure on casters. This allows the units to be moved around more easily.

Read the installation instructions carefully before attempting to install and operate the MX Series power systems.

1.2 Manual organization and format

All user documentation for California Instruments power sources is provided on CDROM in electronic format. (Adobe Portable Document Format) The required Adobe PDF viewer is supplied on the same CDROM. This Installation manual is provided only in hardcopy form to ensure that the installation information is available to all MX users and installers.

To request a hardcopy of other MX Series manual from California Instruments, contact customer service at support@calinst.com. There will be an additional charge for printed manuals. You can also print these manuals directly from the included CD ROM.

2. Unpacking and Installation

2.1 Unpacking

Inspect the unit for any possible shipping damage immediately upon receipt. If damage is evident, notify the carrier. **DO NOT** return an instrument to the factory without prior approval. Do not destroy the packing container until the unit has been inspected for damage in shipment. If possible, **retain the container** (wooden crate) in the event the system ever has to be returned to the factory for either repair or upgrades



WARNING: *This power source weighs approximately 1150 lbs / 522 Kg. Obtain adequate help when moving the unit. Make sure the location (floor) in which the MX Series unit(s) will be installed can support the weight of the unit(s).*

2.2 Power Requirements

The MX Series power Source has been designed to operate from a three-phase, three wire (Wye or Delta) AC input line. A protective earth connection is required as well. (PE).

Available three-phase input settings are 208 V_{LL} (option -208), 230 V_{LL} (option -230), 400 V_{LL} (option -400), or 480 V_{LL} (option -480).



Figure 2-1: The MX45 Power Source



CAUTION: *Do not connect 400 or 480V into a unit set for 208 or 230V unit, the result could be a severely damaged unit. Always check the input rating on the model number tag before connecting AC input power. Consult factory if input settings have to be changed.*

2.3 Mechanical Installation

The MX45's are completely self-contained power sources. They are to be used free standing on a solid surface. The units are fan cooled, drawing air in from the front and exhausting at the rear. The front and back of each unit must be kept clear of obstruction and a 6" clearance must be maintained to the rear. Special consideration of overall air flow characteristics and the resultant internal heat rise must be considered at all times to avoid self heating and over temperature problems.

2.4 AC Input Connections and Wiring

Three phase Delta or Y AC input voltage of sufficient amperage (consult AC input specifications for maximum AC current per phase) is required to power the MX Series.

Note: *AC power should be routed through a properly sized and rated three-phase PROTECTIVE CIRCUIT BREAKER or similar branch circuit protection device with disconnect capability. This will protect building wiring and other circuits from possible damage or shutdown in case of a system problem. It will also facilitate removing AC input power to the MX system in case of service or reconfiguration requirements.*

Note: *AC input wiring and connections must conform to local electrical safety codes that apply. Always consult a qualified electrician prior to installation of any MX System.*

AC input connections are to be made directly to the input fuse block. The input fuse block is located on the lower left hand corner of the front of the MX45 chassis. To access the input fuse connection block, the protective front cover needs to be removed first.



CAUTION: *Always disconnect any input power completely when removing any protective cover and allow the internal capacitors to fully discharge (minimum of 15 mins) before removing any cover.) See Figure 2-2 for details.*

No wiring for AC input connections is provided with the MX Series and must be provided by the end user or installer. Input wiring should be entered through the right hand side (when facing the back of the MX45, see Figure 2-4) wire access opening located at the rear bottom of the MX45 chassis. A wire channel (marked as [2] in figure below) is provided below the input transformer to allow the input wiring to be routed to the front of the unit where the connections are to be made.



WARNING: *The power source's input connection wiring gage (size) must be sized for the maximum input current rating to ensure user safety and avoid possible power source damage, regardless of the actual output load.*

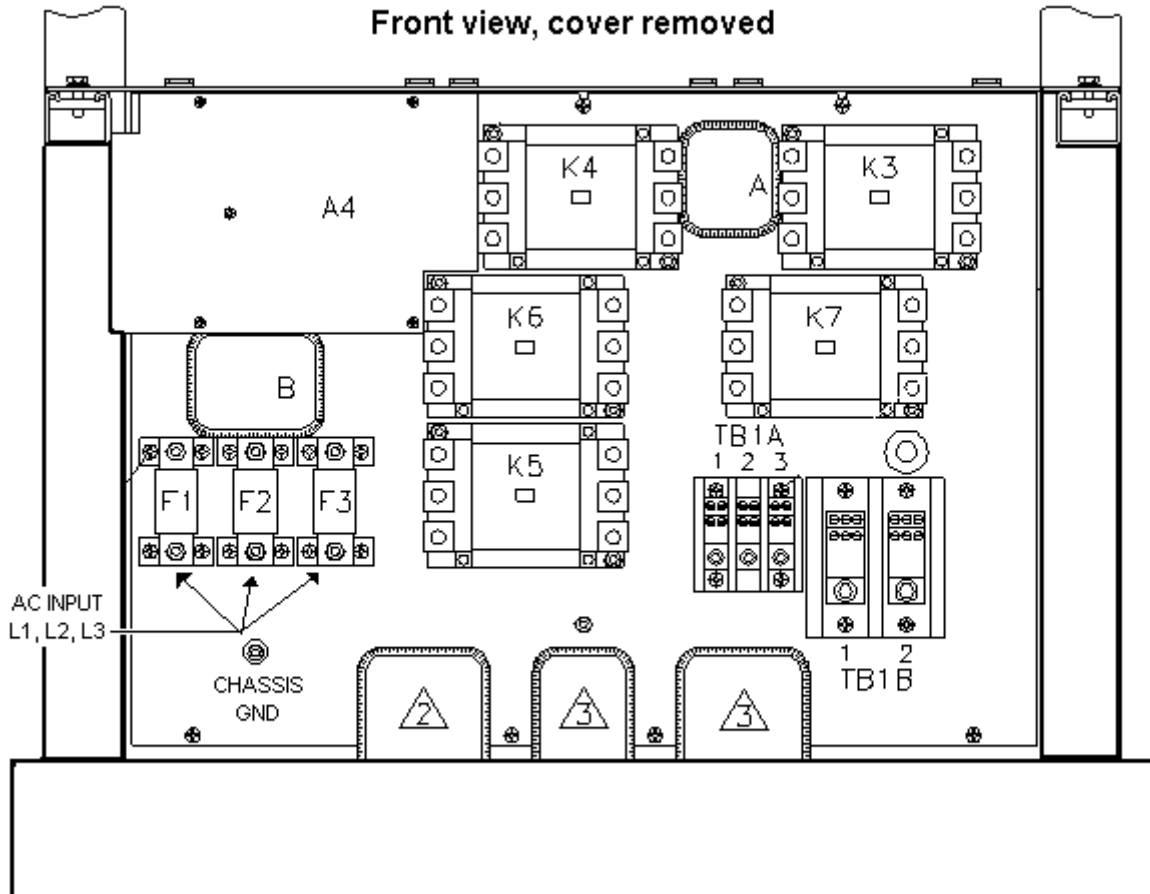


Figure 2-2: Location of AC Input Fuse Block and Chassis Ground Connection

Note: To comply with product safety requirements, EARTH GROUND must be connected to the chassis of the AC power system using the ground stud located directly below the AC input fuse block. Use a Green/Yellow ground wire.

Note: DO NOT USE THE NEUTRAL CONNECTION OF A 3 PHASE Y AC POWER CONNECTION IN PLACE OF A TRUE EARTH GROUND CONNECTION. AC power system neutrals cannot be used for protective earth ground.

The mains source must have a current rating equal to or greater than the input fuses and the input wiring must be sized to satisfy the applicable electrical codes. The front cover must be re-installed prior to use and the strain relief provisions located at the rear bottom of the unit must be used to maintain protection against hazardous conditions.

WARNING:

**DELTA INPUT WIRING CONNECTION ONLY.
NO NEUTRAL CONNECTION IS NEEDED.**

**DO NOT USE AN AC NEUTRAL CONDUCTOR FOR
GROUNDING THE MX CHASSIS. USE A SEPARATE
PROTECTIVE EARTH GROUND CONNECTION ONLY.**

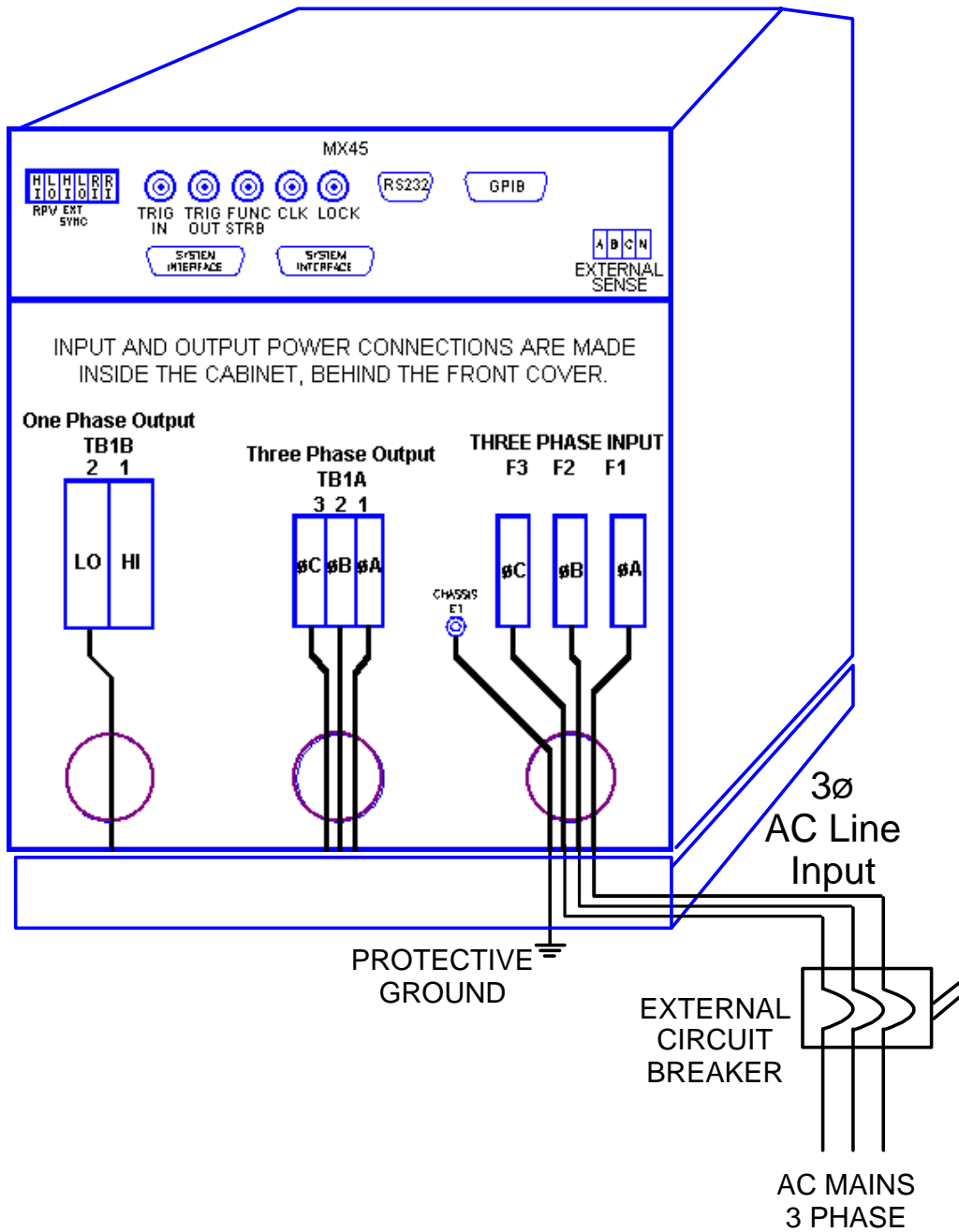


Figure 2-3: MX45 AC Input Connection Diagram

The input power cables and protective circuit breaker used must be large enough to handle the input current and input voltage of the power source and must conform to local electrical codes. Consult a qualified electrician prior to installation. Table 2-1 shows the size of the cables that may be used per MX45 cabinet. Note that wires must be sized to accommodate the worst-case maximum current that may occur under low line conditions. Local electrical codes may also require different wire types and sizes. These ratings should also be used when selecting a circuit breaker or equivalent disconnect device.

Cable lengths must not exceed twenty-five (25) feet. For lengths greater than 25 feet, calculate the voltage drop from the following formula:

$$2 \times \text{DISTANCE} \times \text{CABLE RESISTANCE PER FT.} \times \text{CURRENT} = \text{VOLT DROP}$$

Table 2-1: Suggested Input Wiring Sizes for each MX45 Cabinet

Nominal Line Voltage	Load Current @ low line	Wire Gauge (US)	Circular Mils (Kcmils)	Metric (mm ²)
480 V	75 Arms	6 AWG	26.24	13.3
400 V	90 Arms	4 AWG	41.74	21.1
230 V	157 Arms	2 AWG	66.36	33.6
208 V	175 Arms	1 AWG	83.69	42.4



CAUTION: *Capacitors in the power source may hold a hazardous electrical charge even if the power source has been disconnected from the mains supply. Allow capacitors to discharge to a safe voltage before touching exposed pins of mains supply connectors.*

Power modules need at least 15 Minutes to discharge to safe levels before they can be removed.

2.5 AC On/Off Circuit Breaker on MX45 front panel.

It is important to understand the purpose and operation of the On/Off circuit breaker of the MX45 located on the lower left side of the front panel. This is a 2A rated breaker that is used to engage and protect the LV Power supply of the MX45 chassis only. The LV Power supply provides DC bias power to the entire MX45 system. The AC input power is routed through a set of three AC line fuses (F1, F2 and F3) located in the lower left bottom corner of the MX45. (See Figure 2-2 for fuse locations). These fuses protect the three MX45 amplifier and the AC input transformer from excessive input currents. The AC input power is connected to the input transformer through a large three pole contactor. Removing AC power to the LV Power Supply by opening the front panel circuit breaker (moving the lever to the down (OFF) position) will cause this contactor to lose its coil voltage and will result in it opening and disconnecting the input transformer and amplifier from AC mains input.

Note: *If any MX45 system failure has occurred on any part of the MX45 system, AC input power must be removed immediately and not restored until the system has been inspected by a qualified service technician.*

Always turn off the On/Off Circuit breaker before re-applying AC input power.



CAUTION: The AC input fuses can only be checked is the MX45 is completely de-energized and disconnected from any AC power input.

Note: Under no circumstances should AC input power be applied if one or more of the AC input line fuses have failed and opened up.

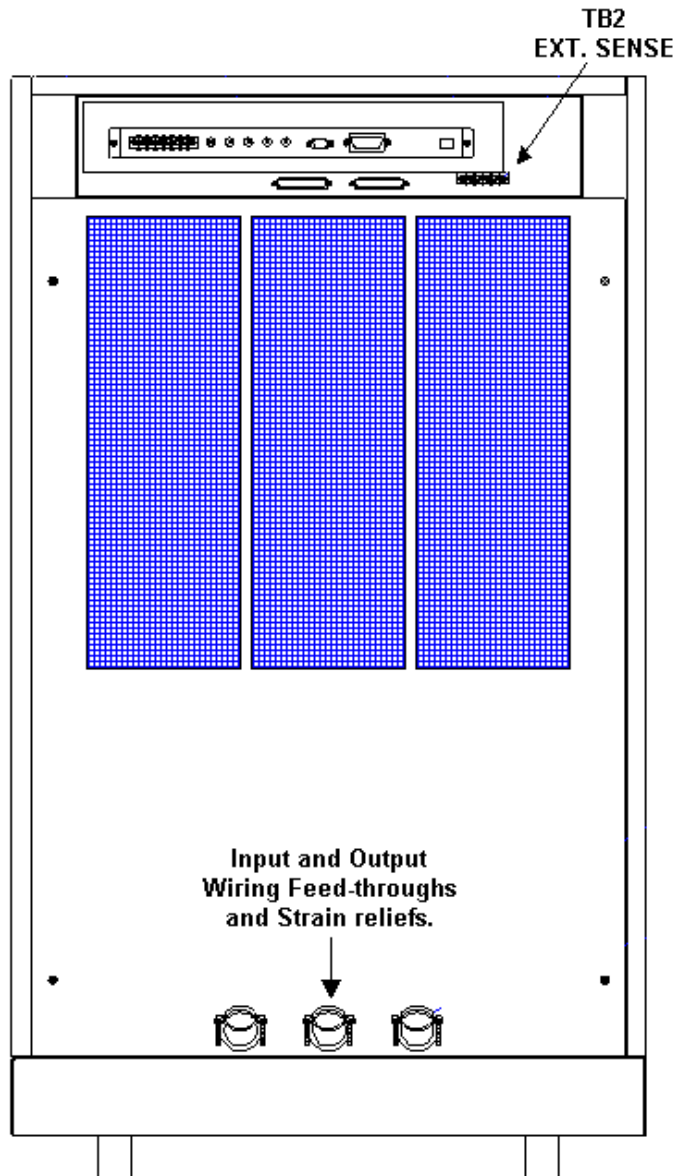


Figure 2-4: Rear Panel

2.6 Output Connections

2.6.1 Output Wiring

The output terminal blocks, TB1A and TB1B are located at the front of the unit behind the bottom access panel. See Figure 2-2 for details.

Three phase output line connections are made to terminal block TB1A. The phase outputs are labeled A, B and C. The neutral connection (if needed) can be made on terminal block TB1B. If the model used is a MX45-3Pi with single phase capability, the single phase A output connection is available on TB1B as well. Note that the neutral for either single or three-phase mode is always located on TB1B. The neutral connection is always required for single-phase output mode on a MX45-3Pi and may be used if needed for the EUT for all three-phase output modes.

The external sense inputs allow the power system output voltages to be monitored directly at the load and must be connected at TB2 when the sense is programmed for external. The external sense input does not have to be connected when Internal Sense is programmed. The external sense wires are to be connected to TB2 on the rear panel and should be run using a twisted shielded cable. See Figure 2-4 for location of TB2 and Figure 2-5 for shield connection detail.

Note: *For External Sense connection, a shielded cable MUST be used with the shield connected to chassis ground at the Ext. Sense connector. (See Figure 2-5).*

External sense is recommended for multi-cabinet systems is the output wiring from the cabinets to the common output terminal block supplied is not of equal length.

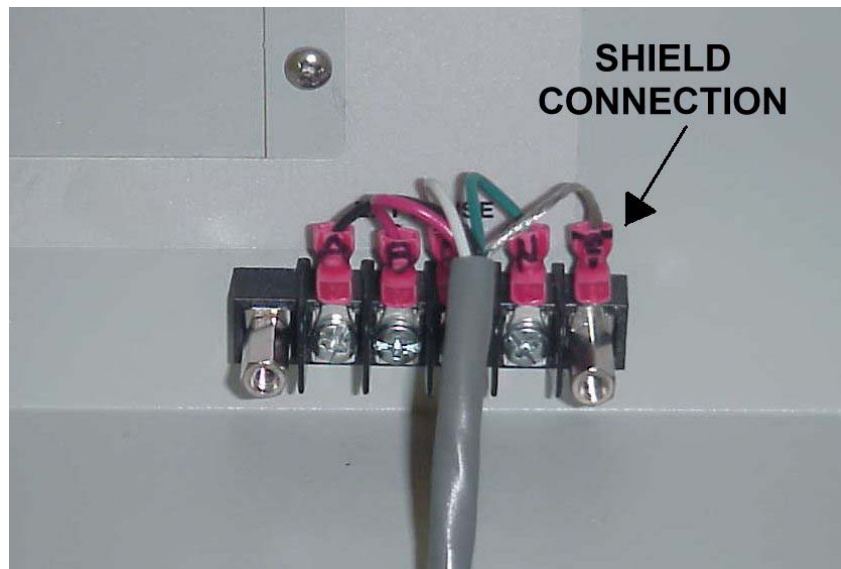


Figure 2-5: External sense cable shield connection to chassis ground

Note: *The output of the power source is isolated from the input line and floating with respect to chassis ground. If needed, either side (HI or LO) may be grounded.*

If the EUT changes frequently, you may want to consider using some quick disconnect scheme external to the MX45 so it will not be necessary to power down the MX45 and remove the front covers. This can take the form of a panel-mounted socket (1 or 3 phase) of sufficient current and voltage rating. (Not supplied with MX45)

The output power cables must be large enough to prevent a total voltage drop exceeding 1% of the rated output voltage between the power source and the load. Table 2-2 shows the size of the cables that may be used. Note that wires must be sized to accommodate the maximum current that is available. This may be a function of the voltage range and phase mode on some MX45 models. If the MX45 has more than one output voltage range, size the wires for the lowest available voltage range as the currents will be highest in that range.

Cable lengths must not exceed twenty-five (25) feet. For lengths greater than 25 feet, calculate the voltage drop from the following formula:

$$2 \times \text{DISTANCE} \times \text{CABLE RESISTANCE PER FT.} \times \text{CURRENT} = \text{VOLT DROP}$$

Table 2-2: Suggested Output Wiring Sizes

Load Current	Wire Gauge (US)	Circular Mils (kcmils)	Metric (mm ²)
65 AMPS	6 AWG	26.24	13.3
130 AMPS	4 AWG	41.74	21.1
260 AMPS	1/0 AWG	105.6	53.5
400 AMPS	2/0 AWG	133.1	67.4

2.6.2 Output Terminal Blocks

The MX45-3Pi and MX45-3 have two output terminal blocks, TB1A and TB1B. The MX45-1 only has one output terminal block, TB1B. The terminal blocks are large enough to accommodate the recommended wire gauge sizes shown in Table 2-2. The terminal blocks are located in the lower right corner on the front of the unit. The front panel needs to be removed to access these terminal blocks.



CAUTION: REMOVE ALL INPUT POWER TO THE MX45 BEFORE REMOVING THE FRONT PANEL.

The correct standard size Allen wrenches for connecting output wiring to TB1A and/or TB1B are supplied with each MX45 in the ship kit. Look for a brown envelope. If the correct tools cannot be found, contact California Instruments customer service at support@calinst.com.

Terminal block TB1B always provides the output neutral connection, regardless of the phase mode (1 or 3 phase output mode).

In single-phase mode, phase A output is provided through terminal 1 of TB1B.

In three-phase mode, phase A, B and C outputs are provided through terminals 1, 2 and 3 of TB1A respectively.

Connector	Terminal	Mode	Output
TB1A	1	3 Phase	Phase A
	2	3 Phase	Phase B
	3	3 Phase	Phase C
TB1B	1	1 Phase	Phase A
	2	1 and 3 Phase	Neutral

Table 2-3: Output Terminal connections.

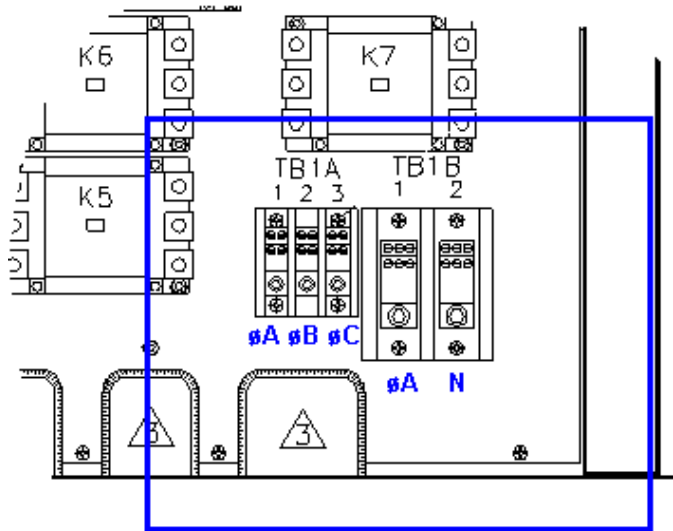


Figure 2-6: Location of Output Terminals

2.6.3 MX45-1 and MX45-3Pi 1 ϕ mode Output Wiring Diagram

Figure 2-7 shows the required output connections for a MX45-1 or MX45-3Pi in single phase mode output configuration (rear-view perspective). See section 2.6.4 for the MX45-3Pi in three-phase mode.

Always disconnect all input power from the MX45 before removing the front panel cover that provides access to the input and output terminal connections. Route the wires from the back of the MX45 to the front in the provided cable guides.

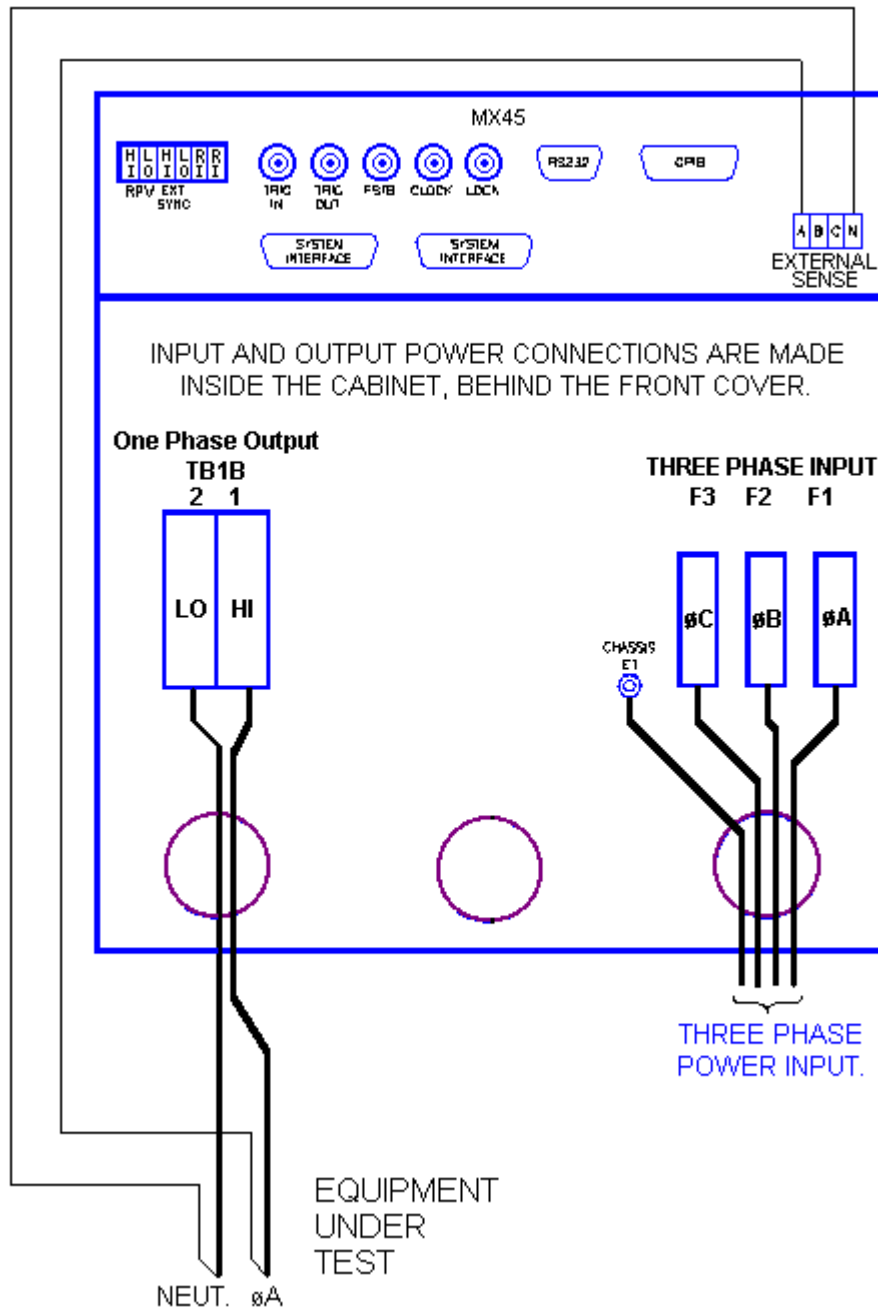


Figure 2-7: MX45-1 Output Wiring

2.6.4 MX45-3 and MX45-3Pi 3 ϕ mode Output Wiring Diagram

Figure 2-8 shows the required output connections for a MX45-3 three phase or a MX45-3Pi in three phase mode output configuration (rear-view perspective). See section 2.6.2 for the MX45-3Pi in single-phase mode.

Always disconnect all input power from the MX45 before removing the front panel cover that provides access to the input and output terminal connections. Route the wires from the back of the MX45 to the front in the provided cable guides.

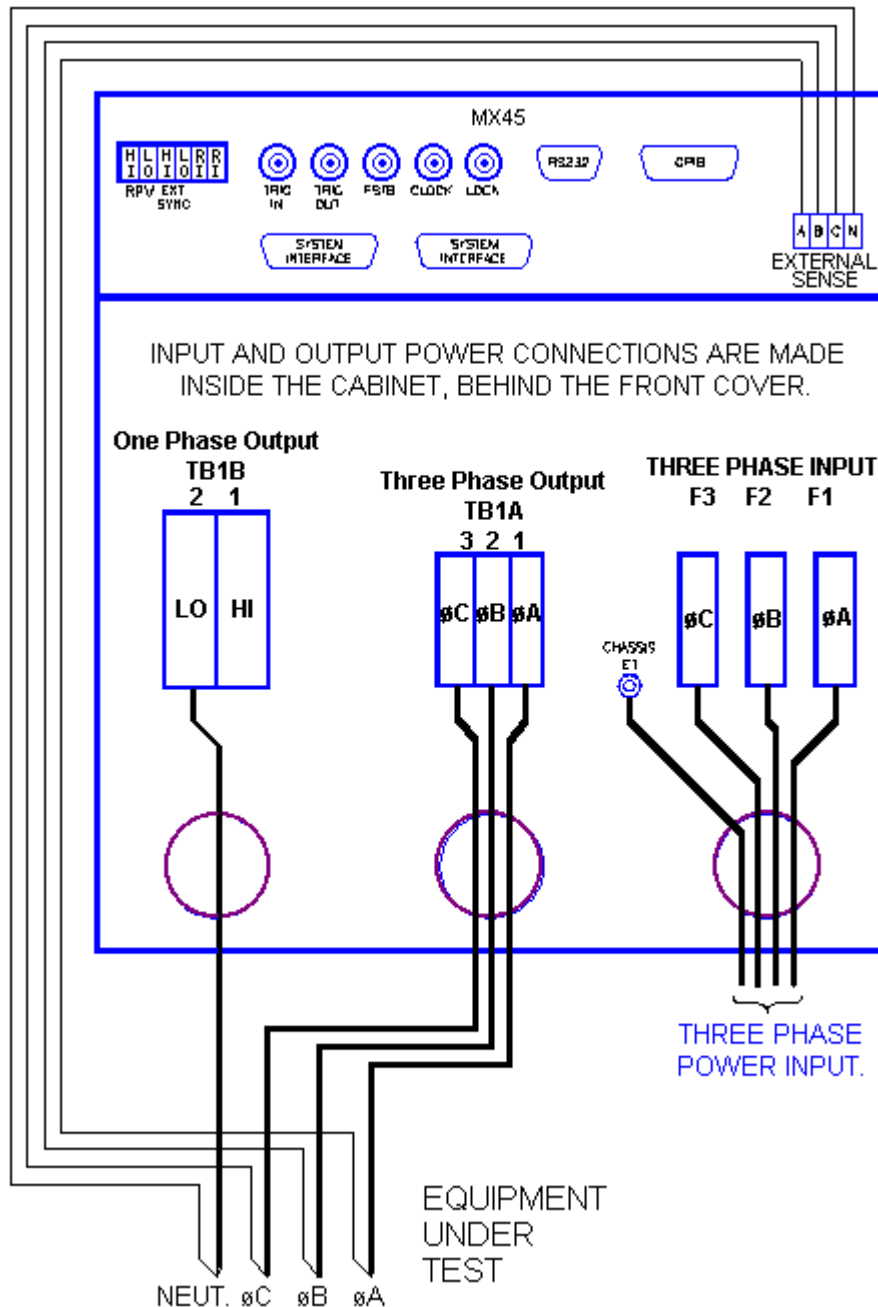


Figure 2-8: MX45-3 Output Wiring

2.6.5 MX90 Output Wiring Diagram

Figure 2-9 shows the required output connections for a MX90-3 three phase output configuration (rear-view perspective). Always disconnect all input power from the MX90 before removing the front panel cover that provides access to the input and output terminal connections. Route the wires from the back of the MX45 chassis to the front in the provided cable guides. MX90 and MX135 systems are shipped with external output terminal blocks that enable the output wiring from two or three chassis to be combined, providing a single point of connection to the EUT. These blocks are not enclosed however.

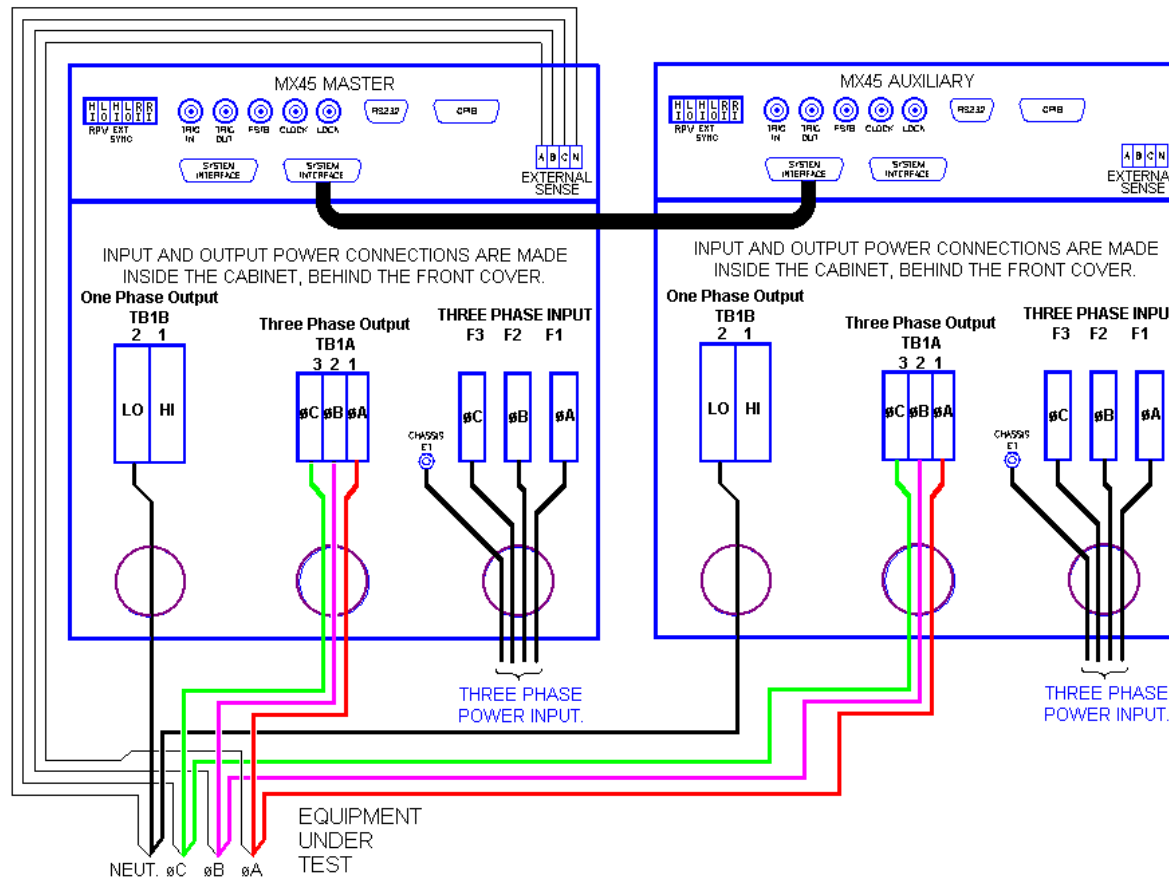


Figure 2-9: MX90 or MX90-MB Output Wiring

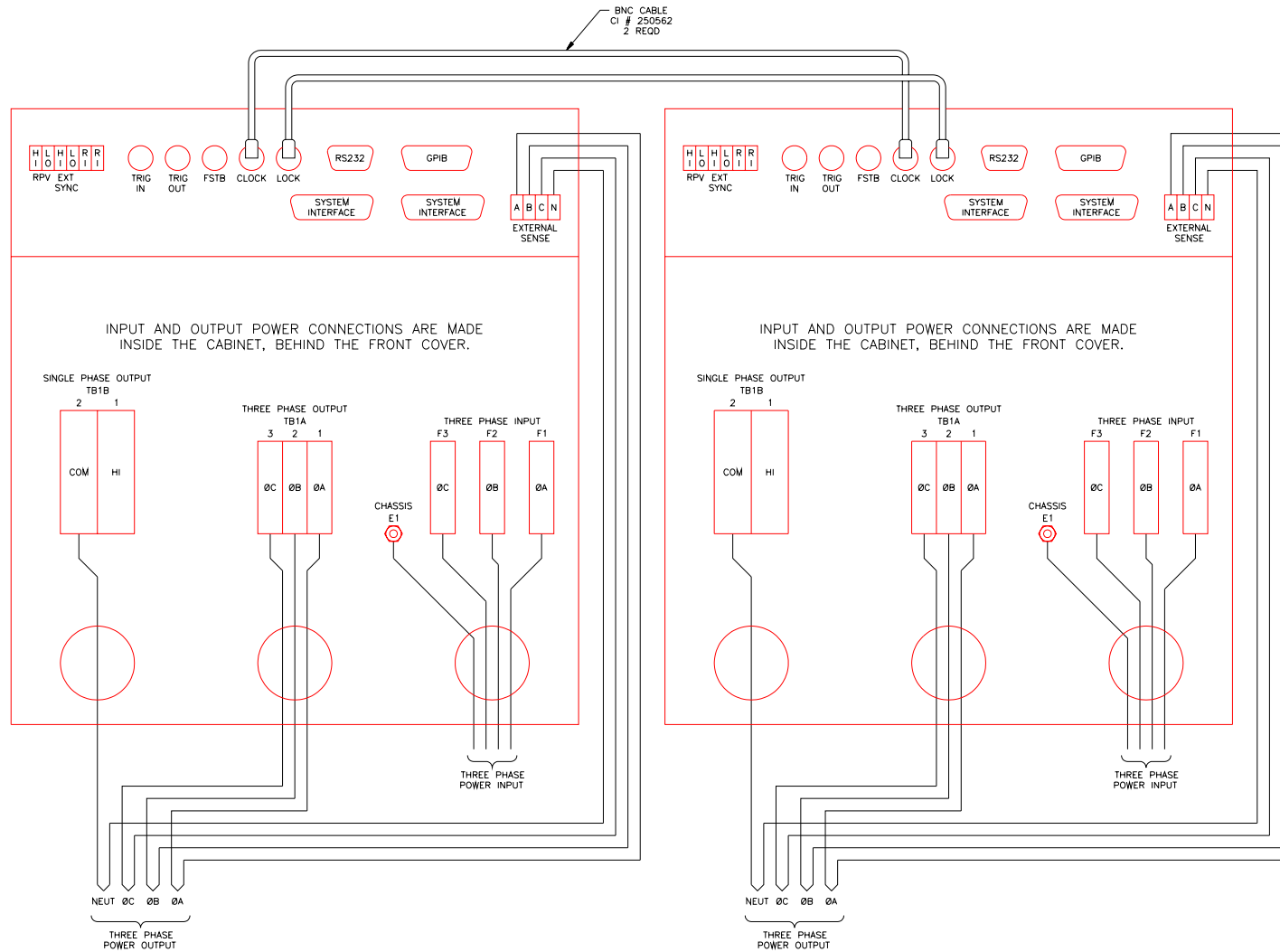


Figure 2-10: Two MX45's in Clock and Lock mode Output Wiring

2.6.6 MX135 Output Wiring Diagram

Figure 2-11 shows the required output connections for a MX135-3Pi or MX135-3Pi-MB three phase output configuration (rear-view perspective). Always disconnect all input power from the MX135 before removing the front panel cover that provides access to the input and output terminal connections. Route the wires from the back of the MX45 chassis to the front in the provided cable guides. Note that the master is shown in the center in this drawing. MX90 and MX135 systems are shipped with external output terminal blocks that enable the output wiring from two or three chassis to be combined, providing a single point of connection to the EUT. These blocks are not enclosed however.

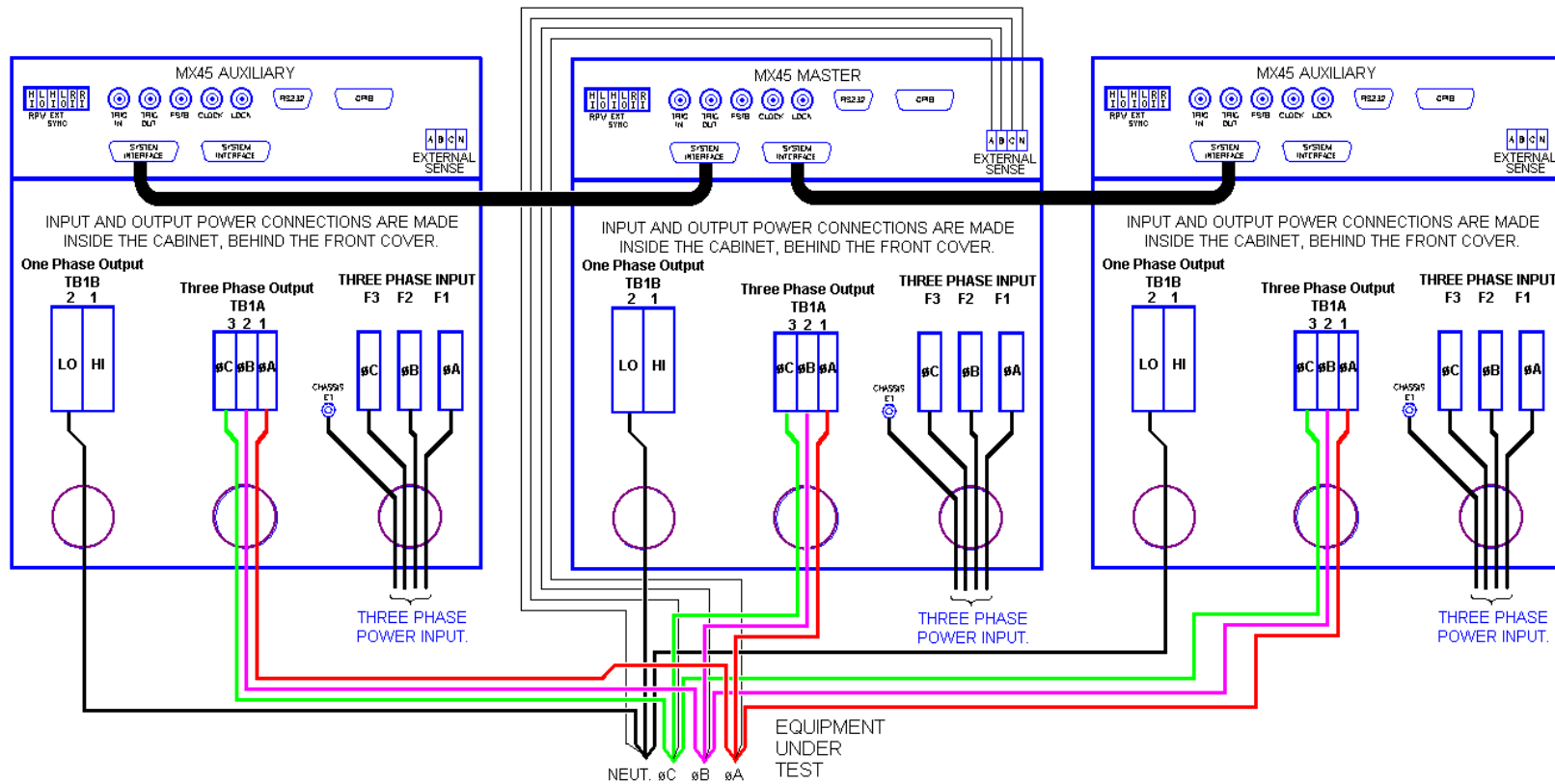


Figure 2-11: MX135 or MX135-MB Output Wiring

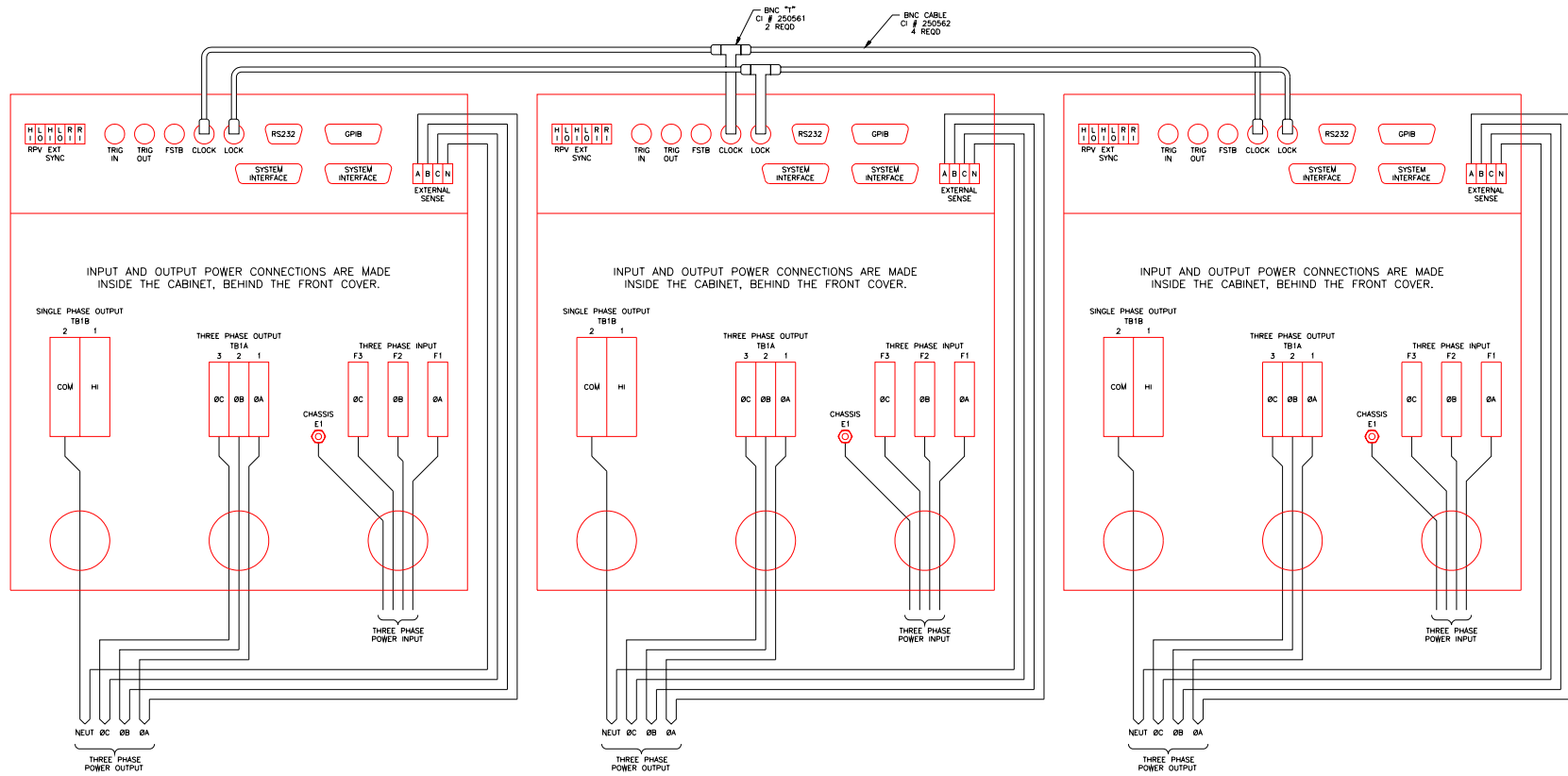


Figure 2-12: Three MX45's in Clock and Lock mode - Output Wiring

2.6.7 Multi-Chassis Output Connections

If two or more MX chassis are used to form a single power system, the outputs of all chassis need to be combined (paralleled by phase). This can be done directly at the EUT if convenient or using the provided heavy-duty terminal blocks. Two blocks are provided with multi-chassis MX systems, one 2-position block and one 3-position block. These blocks allow up to four wires to be combined into one larger wire gauge size wire. The outputs of the 2 or 3 MX chassis are connected on one side of these blocks (Phase A,B and C into the 3 position terminal and the neutral into the 2 position terminal.). The EUT can be connected to the other side. Note that the wire size to the EUT should be sized up to accommodate the double or triple currents per phase.

The dimensions of the supplied terminal blocks are shown in Figure 2-13.

Note that even if the EUT is a three-phase delta input, the output neutrals of the MX chassis' must be connected together for the system to work correctly.

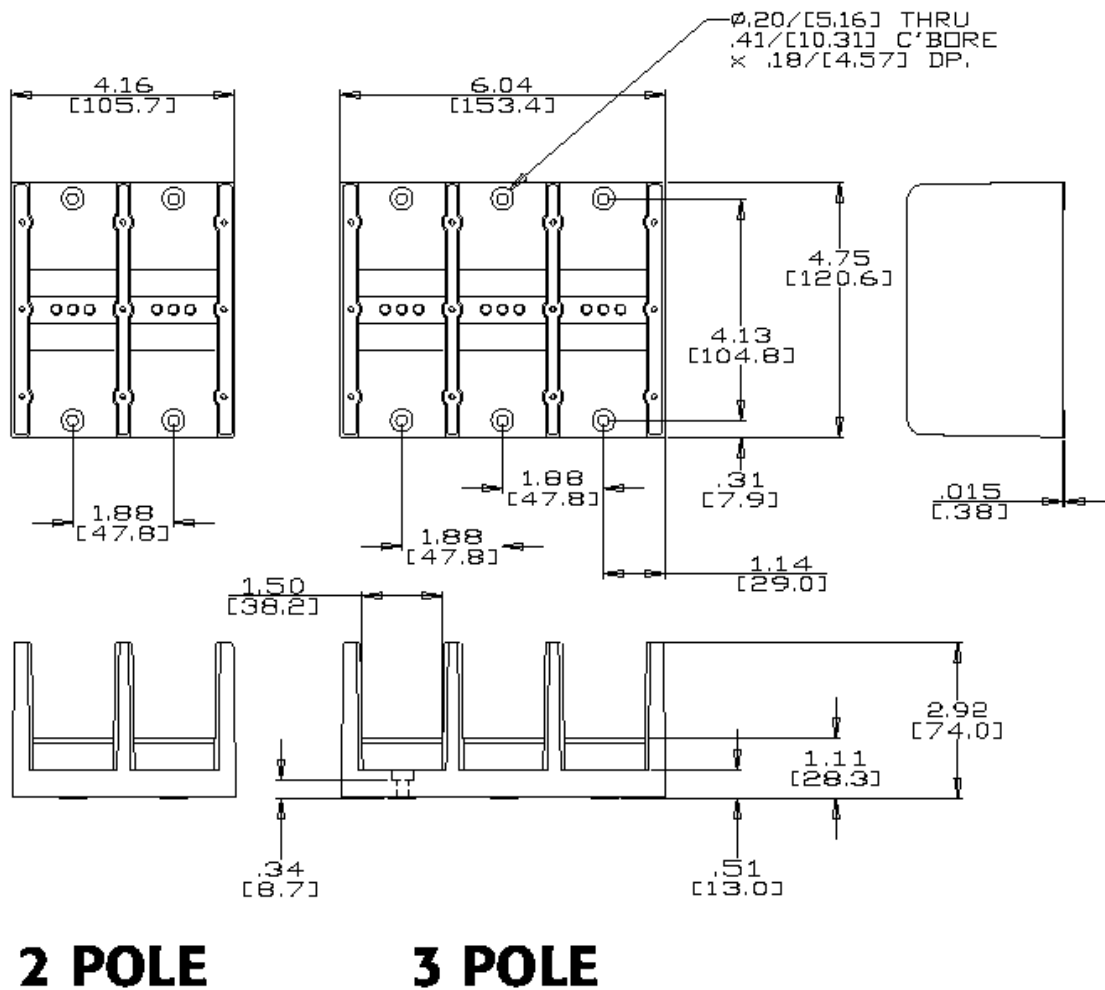


Figure 2-13: Ship kit Terminal Block dimensions

2.7 Connectors - Rear Panel

A number of connectors are located along the top rear covers. These connectors are in a recessed area to protect them from shipment damage.

2.7.1 System Interface



WARNING: The system interface connectors are for use with California Instruments supplied cables, and only between California Instruments equipment.

The Clock and Lock BNC connectors located on the rear panel are used to synchronize and control the phase shift between the three outputs when 3 units are operating as a three-phase clock and lock system. This mode of operation requires the -LKM (on Master unit) and -LKS (on Auxiliary units) options. See paragraph 2.9 for more information on this mode of operation.

A set of two identical System Interface connectors, P8 and P9 is located on the rear panel of each MX45 chassis. The system interface is used to connect the multiple MX45 power sources in a Master/Auxiliary configuration to create MX90 and MX135 models. In these configurations, only the Master MX45 power source has a built-in controller and front panel.

The same connector is also used to control the optional OMNI-3-75 Reference Impedance.

Table 2-4: System Interface Connectors

P8 / P9	Description
1	OUTP: Output ON. Controls state of output relay
2	N/C
3	N/C
4	N/C
5	COM: Common. Signal return.
6	OT: Over temperature. Indicates over temperature condition.
7	N/C
8	CLB: Current Limit B. Programmed current limit reference for phase B
9	CSA: Current Sum Phase A
10	CSC: Current Sum Phase C
11	FLT A: Amplifier Fault Phase A
12	FLT C: Amplifier Fault Phase C
13	XFMR: Optional voltage range select. (-HV or -XV option)
14	PARALLEL: Parallel operation control.
15	INPUT ON: Input power status
16	A ERR LO: Error Signal Phase A, low
17	B ERR HI: Error Signal Phase B, high
18	N/C
19	C ERR LO: Error Signal Phase C, Low

P8 / P9	Description
20	300 VRNG: 300 V AC Range Select
21	COM: Common. Signal return.
22	/REM OFF: Remote Off Control not
23	COM: Common. Signal return
24	FLK/BYP: Flicker / Bypass OMNI control
25	/OVL: Overload not
26	CLA: Current Limit A. Programmed current limit reference for phase A
27	CLC: Current Limit C. Programmed current limit reference for phase C
28	CSB: Current Sum Phase B.
29	N/C
30	FLT B: Amplifier Fault Phase B
31	N/C
32	DC: DC mode control
33	INP OFF: Input power control
34	A ERR HI: Error Signal Phase A, high
35	N/C
36	B ERR LO: Error Signal Phase B, low
37	C ERR HI: Error Signal Phase C, high

2.7.2 Analog Input Connector

Input screw-terminal strip. Functions are called out on rear panel decal. Table shows connections from left to right when standing at the rear of the MX cabinet.

Table 2-5: Analog Interface Connector

Pin	Description
1	RPV HI. INPUT: Analog input for External Modulation
2	RPV Lo. INPUT: return.
3	EXT SYNC HI INPUT: Analog input for external sync mode.
4	EXT SYNC Lo INPUT: return.
5	RI: INPUT: Remote Inhibit. (Contact closure).
6	RI: INPUT: return.

2.7.3 BNC Connectors

BNC connectors. Functions are called out on rear panel decal. Table shows connections from left to right when standing at the rear of the MX cabinet.

Table 2-6: BNC Connectors

BNC	Description
1	Trigger Input (TTL input)
2	Trigger Output (TTL output) (Same signal connection as Function Strobe. Some units may not have this output connected. If you don't get an output trigger on this BNC, use the Function Strobe BNC instead.)
3	Function Strobe (TTL output) (Same signal connection as Trigger Output)
4	Clock (TTL output on Master / TTL input on Auxiliary)
5	Lock (TTL output on Master / TTL input on Auxiliary)
6	Emergency Shut off inter connect. Installed only on –MB systems with –ES Option.

2.7.4 External Sense Connector

Table 2-7: External Sense Connector

Pin	Description
1	Phase A sense
2	Phase B sense
3	Phase C sense
4	Neutral sense

2.7.5 ES Option - Emergency Switch Interconnect for –MB systems – BNC

An optional BNC connector is located on the rear panel for connecting multiple chassis, each having a controller and an emergency shut off switch (-ES option). This connection is required to create an OR-ed operation of more than one –ES switch.

This connector is only present on MX-MB systems with the –ES option. If present, a suitable BNC cable should be used to connect the emergency shut off signal between chassis. This connector is labeled as follows:

"Caution: BNC cable must be connected for system Emergency Shut-Down"

See figure below for an illustration of a MX90-MB-ES interconnect.

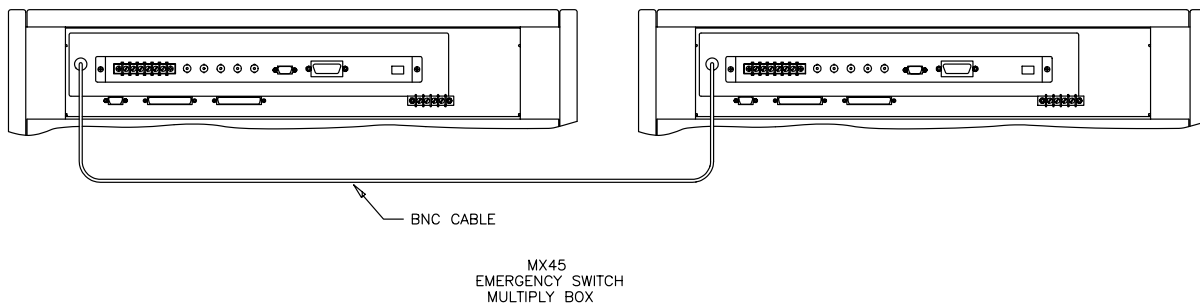


Figure 2-14: Emergency Switch (ES Option) shut off inter connect on -MB systems.

2.8 Multiple Cabinet System Configurations

Multi-cabinet MX models consist of two or three autonomous or Auxiliary MX45-3Pi units. Auxiliary units do not have their own controller and are identified easily by their blank front panel (except for status indicator LEDs). Master units each have their own controller but can be configured as auxiliary units by disconnecting the ribbon cable marked J17 between the controller and the system interface board (P/N 7003-700-1). This disables the controller and allows the MX45 to operate as an Auxiliary unit. (Requires removal of the top cover)

When used as a multi-cabinet system for higher power applications, the controllers in the unit(s) acting as the auxiliary to the master are either disabled or not present.

In addition to disabling the controller if present (as described above), the DIP switch (S1) located on the GPIB / RS232C / IO assembly in the auxiliary cabinets. (Requires removal of the top cover). The correct switch settings are shown below. (shown set for Master cabinet). Note that all units must be powered down before reconfiguring. Also, the output wiring must be changed to accommodate the new configuration.

Note: *If the units being re-configured for multi-cabinet operation were not factory configured this way, it may be necessary to balance the amplifiers by adjusting their gain. Refer to MX Series User Manual (P/N 7003-960) for details on Amplifier balancing.*

When used as a multi-cabinet system, the system interface cables must be connected between the master and the auxiliary cabinets.

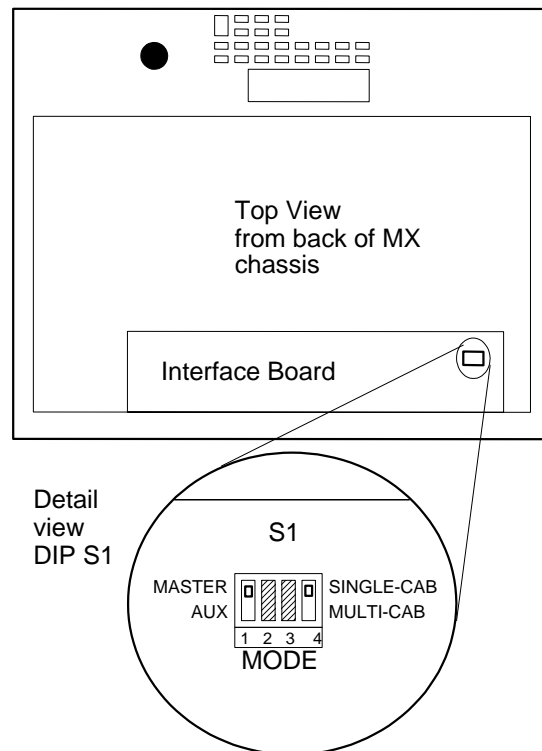


Figure 2-15: Multi-Cabinet DIP Switch Location and Setting

2.9 Clock and Lock Configurations

The MX Series may optionally be equipped for clock and lock mode of operation. This mode is a special form of Master/Auxiliary which requires each chassis to have its controller. As such, it is possible to create 2, 3, 6 or 9 phase power systems using 2 to 3 MX45 chassis. For most 2 or 3 phase configurations, the normal multi-box mode of operation as described in section 2.8 is recommended as it provides a single controller (and GPIB/RS232 control interface).

In a clock and lock configuration, each unit has its own front panel controls (as well as individual GPIB and RS232C interfaces) for operating the supply but the output frequency of the auxiliary unit(s) (-LKS option) is synchronized (locked) to the Master MX45 unit (-LKM).

This mode of operation requires that one MX45 has the -LKM (Lock Master) option and one or two MX45 units have the -LKS (Lock auxiliary) option.

2.9.1 Clock/Lock Configuration Settings

```

                CONFIGURATION SETUP 2
IEC 4-11 =ON          CLK/LOC = ON
IEC 4-13 =ON          WH METER = OFF
PREVIOUS SCREEN     SYSTEM = MX45
    
```

Clock and lock configuration settings for -LKM and -LKS equipped MX45's are set at the factory at the time of shipment and cannot be changed. To check the configuration settings for an MX45, select the UTILITY2, CONFIGURATION screen. In the configuration screen, the CLK/LOC entry determines if the unit is a Master or Auxiliary as follows:

CONFIGURATION 2 Field	Parameter	Description
CLK/LOC	N/A	Stand alone MX45 or MX45-LKM clock and lock master. Frequency mode is set to either INT (internal = default) or SYNC (external sync).
	ON	Auxiliary MX45. Frequency mode selection is INT (internal = for stand alone use) or EXT (external for Clock and Lock mode operation.)

Table 2-8: Clock and Lock Configuration settings

Note that the actual mode of operation of a Clock/Lock MX45-LKM auxiliary unit is determined by the Clock mode set in the PROGRAM2 screen. For clock and lock mode of operation, the master is set to INT and the Auxiliary to EXT.

2.9.2 Clock/Lock Initialization Settings

The mode of operation of the MX45-LKM auxiliary unit is determined by the Clock mode set in the PROGRAM2 screen. Since most clock and lock systems are permanently used in this configuration, the clock mode can be set to EXT (External) at power on by using the INITIAL SETUP3 screen.

```

                INITIAL SETUP 3
VOLT SENSE =INT      CLOCK MODE =MASTER
WAVE GROUP =0       NO. OUTPUT =LAST
PREVIOUS SCREEN    VOLT ALC =OFF
    
```

Available initial settings and their relationship to the Clock and Lock mode of operation are shown in the table below.

INITIAL SETUP 3 Field	Parameter	Description
CLK/LOC	STAND	Normal stand alone mode of operation. For standard MX45 power source with no clock and lock mode of operation.
	MASTER	For master (-LKM) power source in clock and lock mode of operation.
	AUX	For auxiliary (-LKS) power source in clock and lock mode of operation. Powers up with clock mode set to external.

Table 2-9: Clock and Lock Initialization settings

2.9.3 Clock/Lock and External Sync Mode

Note that an MX45-LKM auxiliary unit is factory configured to operate in Clock and Lock mode when EXT clock mode is selected in the PROGRAM2 screen. This means that a MX45-LKS **cannot** be used in normal external sync mode. However, the MX45-LKM master unit can be operated in external sync mode.

Furthermore, since the MX45-LKM master unit is factory set for Master mode of operation, it in turn **cannot** be used as an Auxiliary source in a clock and lock configuration.

2.9.4 Remote Programming of Clock and Lock systems

Since clock and lock systems have multiple autonomous controllers that are synchronized in frequency, remote programming of these systems requires that the application program deals with all MX45 controllers. This often precludes the use of RS232C as generally not enough serial ports are available. The use of GPIB instead also offers the advantage of using the Group Execute Trigger (GET) capability to effect output changes on all phases (MX45's) simultaneously which is otherwise difficult to do.

To set up a GPIB remote controlled clock and lock systems, the GPIB addresses for the individual MX45's must be set to different address values in the UTILITY1, GPIB/RS232 SETUP screen.

Note: *This mode of operation is not supported by the MXGUI Windows software supplied with each MX45 unit.*

2.10 Basic Initial Functional Test



CAUTION: *Work carefully when performing these tests; hazardous voltages are present on the input and output during this test.*

Refer to Figure 2-16 for the required functional test set up. Proceed as follows to perform a basic function check of the power system:

1. Verify the correct AC line input rating on the nameplate of the MX unit(s) and make sure the correct three-phase line voltage is wired to the input of the MX before applying input power.
2. Connect a suitable resistive or other type load to the output of the MX. The load resistance value will depend on the voltage range you plan to check. Make sure the power resistor has sufficient power dissipation capability - up to 15 KW for full load test on one phase of MX45-3 - and that the load used does not exceed the maximum power rating of the MX45. For three phase configurations, this test can be performed on one phase at a time if needed.
3. Connect an oscilloscope and DMM / voltmeter to the AC source output. Set both for AC mode.
4. If the correct voltage is present, turn on the MX unit(s) by closing the On/Off circuit breaker on the front panel. For multi-cabinet systems, turn on the auxiliary unit first and wait for them to cycle on, then turn on the master unit.
5. If the MX has more than one available output voltage range, go to the PROGRAM 1 screen and select the desired voltage range. The output mode can be set from the PROGRAM 2 screen (use the MORE soft key or press the PROGR function key again). Select AC mode.
6. Set the output voltage to 0 volt and close the output relay with the OUTPUT ON/OFF button. There should be little or no output although the DMM may show a noise level, especially if the DMM is in auto ranging mode.
7. Move the cursor to the VOLTAGE field in the PROGRAM 1 screen and either use the keyboard to program a small voltage (20 VAC) or slew the voltage up slowly with the knob. Observe the DMM reading. The reading should track the programmed voltage.
8. Also monitor the scope. The output should be a sinusoidal voltage waveform.
9. If the output tracks, increase the voltage till you reach 80 % of the voltage range or more. Check the output voltage reading and waveform.
10. Select the MEASUREMENT 1 screen by pressing the MEAS button. The output voltage, current and power will be displayed. For three phase configurations, use the PHASE button to select the \emptyset ABC display mode. This will show the voltage, current and power for all three phases. If all phases are loaded equally, the same current and power should be visible for all three unless the voltages are not programmed to the same level. If only one phase is loaded, current and power will only be shown for the loaded phase.

In the unlikely event the power source does not pass the functional test, refer to the calibration procedure in the MX Series User manual (P/N 7003-960) or call California Instrument's customer satisfaction department for further assistance.

A		F	
AC		Functional Test	30
input	9	I	
B		installation	9
BNC		Introduction	7
ES connector	26	M	
C		Multi-cabinet.....	27
Clock and Lock		S	
Initialization	29	sense	
Clock and Lock mode.....	28	wiring	14
Clock and Lock Mode		V	
Configuration	28	voltage drop	
D		cables	12, 15
DIP switch	27	voltage rating	8
E		W	
ES option		Wire Sizes.....	12, 15
BNC	26	wiring	
External Sync		input.....	9
Clock/Lock.....	29		